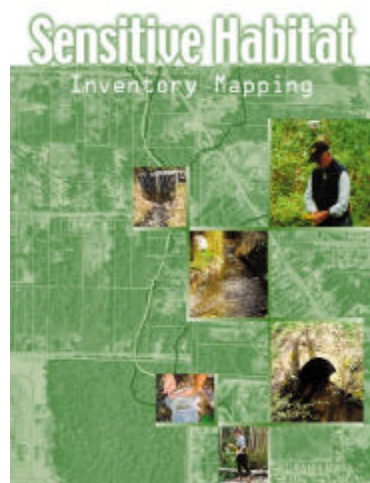


## Standards and Methods



<b>Introduction</b>	
<b>Module 1</b>	Existing Information Review
<b>Module 2</b>	Watershed Overview
<b>Module 3</b>	Watercourse Centreline and Habitat Feature Mapping
<b>Module 4</b>	Riparian Area Classification and Detailed Cross Sections
<b>Module 5</b>	GPS Surveying Procedures
<b>Module 6</b>	Fish Inventory
<b>Module 7</b>	Imperviousness
<b>Module 8-9</b>	Photodocumentation /SHIM Data Deliverables and Data Management
<b>Appendix A</b>	Using the SHIM Data Dictionary v23.0
<b>Appendix B</b>	SHIM Data Dictionary
<b>Appendix C</b>	Global Positioning System Specifications
<b>Appendix D</b>	TSCI - Asset Surveyor Operation

### Coastal Shoreline Inventory and Mapping Procedures (under construction)

### DIAP Viewer and 3D Digitizing

Direct feature digitizing eliminates the entire polygon transferring process and its inevitable errors. Digitized features conform precisely to the terrain surface. Vector data may be digitized superimposed over the image in three-dimension (X,Y,Z) co-ordinates. Z is derived from the triangulated surface.



## How to Access the Network

Visit the Community Mapping Network web site at [www.cmnbc.ca](http://www.cmnbc.ca). You will find a list of the current mapping applications under the heading "Maps and Data Entry". Note that you will need to install the Mapguide Viewer plug-in to view the maps and that this site was developed for Internet Explorer (some functions will not be compatible with Netscape). The Mapguide viewer will download automatically but if it doesn't, you will need to go to the URL <http://www.autodesk.com/prods/mapguide/download/index.htm>.

## Contacts

**Brad Mason**  
Project Coordinator  
Fisheries and Oceans Canada  
Habitat and Enhancement Branch  
200 - 401 Burrard St.  
Vancouver, BC, V6C 3S4  
Tel: (604) 666-7015  
E-mail: [masonb@dfo-mpo.gc.ca](mailto:masonb@dfo-mpo.gc.ca)

**Rob Knight**  
Project Coordinator  
Ministry of Water, Land and Air  
Protection  
Lower Mainland Region  
10470 152 St.  
Surrey BC, V3R 0Y3  
Tel: (604) 582-5317  
E-mail: [rknight@telus.net](mailto:rknight@telus.net)

**Suzanne Richer**  
Application Developer  
33 Inverary Court  
Porters Lake, N.S.,  
B3E 1M8  
Tel: (902) 827-3746  
E-mail: [sricher@hfx.eastlink.ca](mailto:sricher@hfx.eastlink.ca)



# Community Mapping Network

Sharing Natural Resource Information

CMNBC.CA



The **Community Mapping Network (CMN)** integrates and links community and government natural resource information using an online interactive mapping system called Autodesk Mapguide. GIS maps & data are "web-served" through the BC Conservation Foundation office in Surrey, British Columbia, Canada.

Natural resource information is integrated to assist communities and local governments with landuse planning, to promote conservation and protection of sensitive habitats and to raise awareness and respect for ecological values. Many types of information are included such as fish and wildlife distribution, mapped and unmapped streams and wetlands, eagles and herons, rare and endangered species, biodiversity and possible restoration sites.

Standard methods for collecting and mapping natural resources information are developed through the Network but all community mapping projects, regardless of methodology are welcome.

Building local capacity and expertise, sharing ideas and linking all community data across administrative boundaries are the key objectives of the Network. In this way, network members can successfully build on each other's investments.

Developed by the Sensitive Habitat Inventory and Mapping Partnership

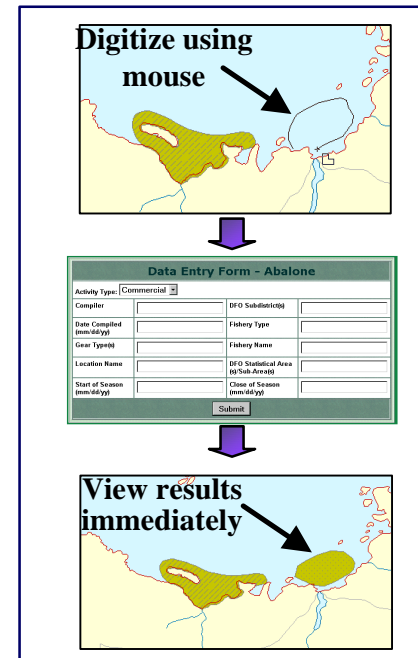


## Community Mapping Network



## Customized Applications For Online Data Entry

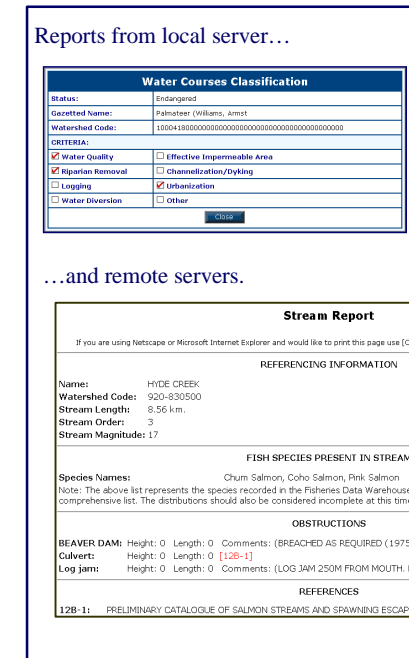
### Digitize a point, line and polygons



### Digitizing features

You can digitize a point, line or polygon feature on-line and see the new feature immediately upon refreshing the map. Once the shape of the feature is digitized, a form, customized to each application, is presented to the user for data capture or just data input.

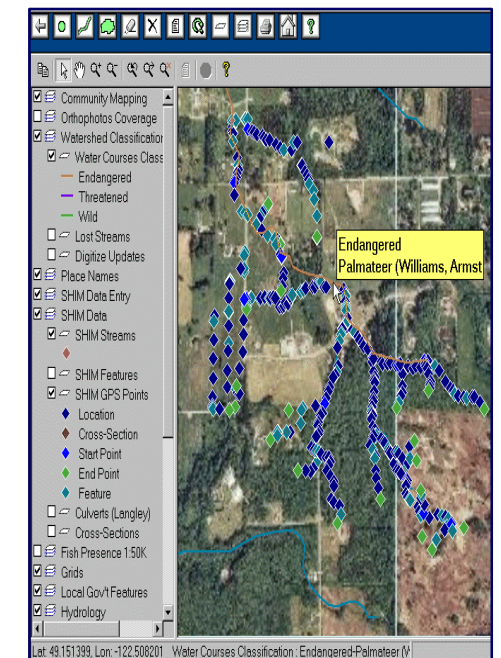
### Get reports from features



### Get an up-to-date customized report.

Select a feature on the map and get an up-to-date report generated directly from the database. The database can be located anywhere. The rivers layers is linked to the Fish Wizard and FISS reports are generated on-the-fly.

### View map features.



### Overlay layers of information on the map.

Customize the map by turning on and off the various layers of information available in both raster and vector format. The navigation tools and the mapping tools located at the top left corner allow you to move around the map, query the data, add new information, and edit existing information.

## Objectives

- Share community and government resources information
- Build local capacity
- Develop methods and standards
- Build common systems, tools and internet mapping applications
- Communicate successes and failures of projects
- Identify funding opportunities to communities
- Share expertise and tools
- Promote planning for sustainable communities

## Advantages

- Standards and quality assurance procedures
- Applications customized to meet community needs
- Low cost / maintenance
- Security through username and password
- Re-use code for applications and share in costs for developing new tools and functionality
- Live / Interactive
- Seamless coverage for BC
- Very user-friendly
- Accessible to all user groups
- Access to experts: biologists, mappers, GIS specialists

## Community Mapping Network "Directory"

The geographic location of each community mapping project is shown in the directory using an interactive map. A detailed project description highlights goals, methods, and status. Contact information for the lead organization(s) responsible for each project is also provided, and interested viewers are encouraged to contact the organization to ask questions or find out how they can get involved. Since many of the community mapping projects are ongoing, information found in this directory atlas is constantly being updated.

The purpose of the directory is to make valuable information acquired from community mapping projects available to both local and international communities.

The more individuals and groups that become part of the community mapping network, the greater our knowledge base of the general health of natural resources in a community and across all communities. This knowledge is essential for creating appropriate policies that will ensure the conservation of our natural resources and biodiversity.



<http://www.shim.bc.ca/global/main.htm>