

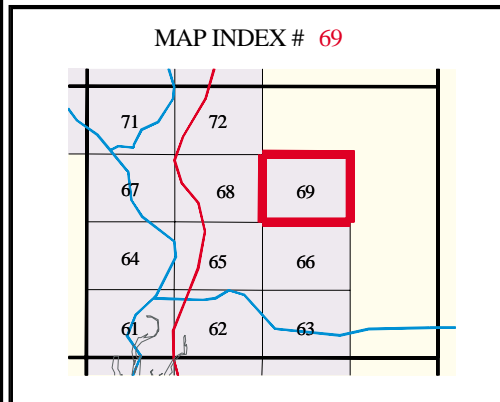
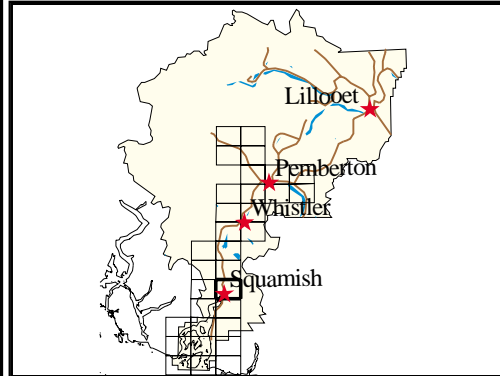
4 93 000mE

4 94 000mE

4 95 000mE

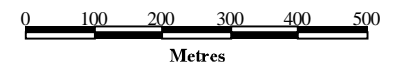
4 96 000mE

Vol 1. Sea to Sky Sensitive Habitat Atlas for Squamish Lillooet Regional District 092G.075.4.1



LEGEND

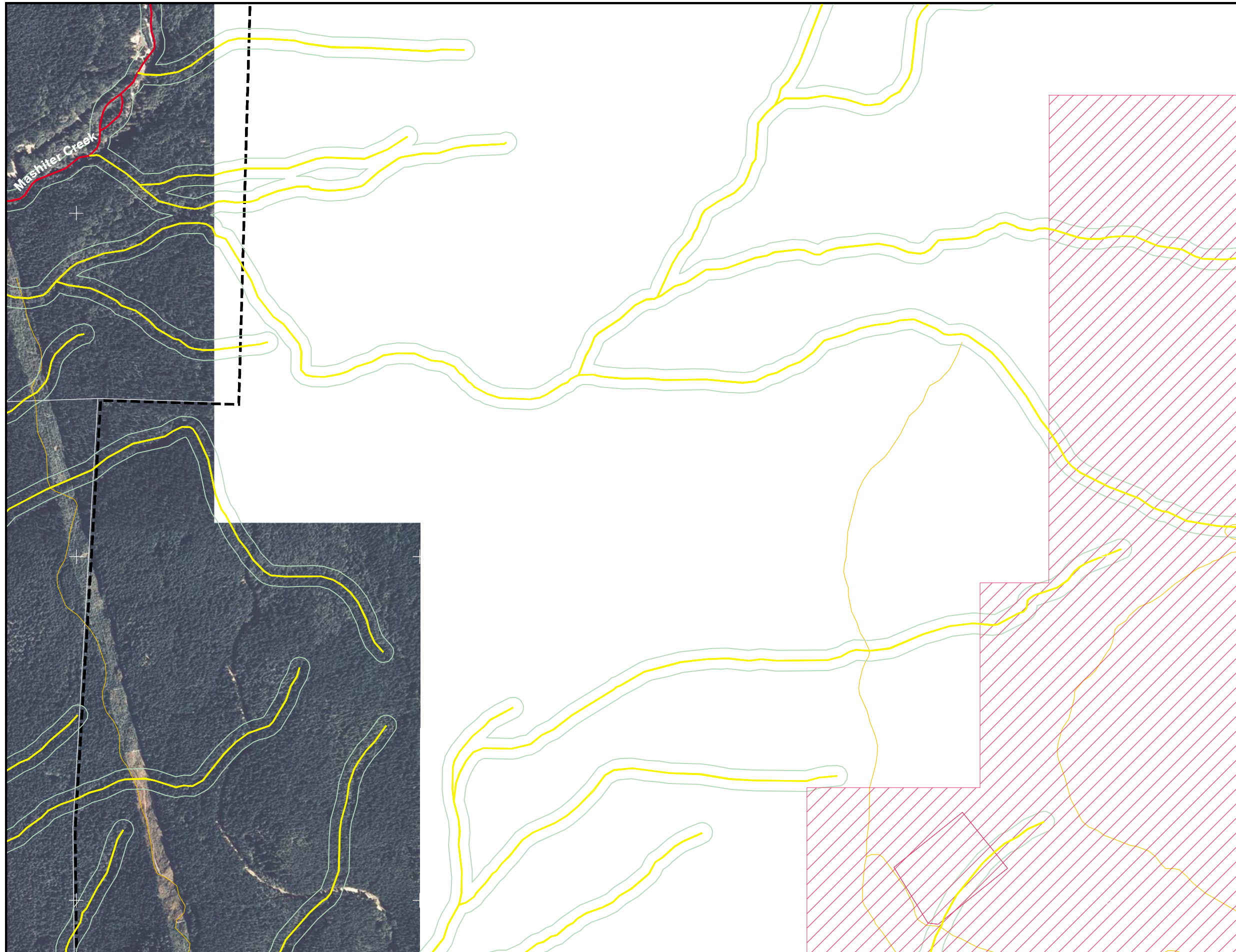
- Waterbody Classification**
- Fish Presence
 - Unknown Fish Presence
 - Fish Absence
 - Wetland
 - Fisheries Planning Boundary (30m)
 - Parks and Protected Areas
- Other Features**
- SLRD Boundary
 - Municipal Boundary
 - Lot Boundary
 - Roads
 - Indian Reserve



Universal Transverse Mercator
Zone 10, NAD83

1:11,000
McElhanney Group Ltd. Orthophotos
1999, 1m Pixel Resolution

These maps were prepared by project partners for planning purposes only and are not legal documents. They are a composite of different datasets existing as of May 2004 that were developed from different methods and dates. These maps are provisional and should be used with caution. Refer to the Introduction in the Sea To Sky Sensitive Habitat Atlas for data sources. The partners are not responsible for damages resulting from any omissions, deletions or errors.



55 13 000mN

55 12 000mN

55 11 000mN